

carbon, graphite and grafana

carbon

install carbon-cache service

```
apt-get install graphite-carbon
```

enable boot startup in `/etc/default/graphite-carbon`

enable `ENABLE_LOGROTATION` in `/etc/carbon/carbon.conf`

extend retentions

`/etc/carbon/storage-schemas.conf`

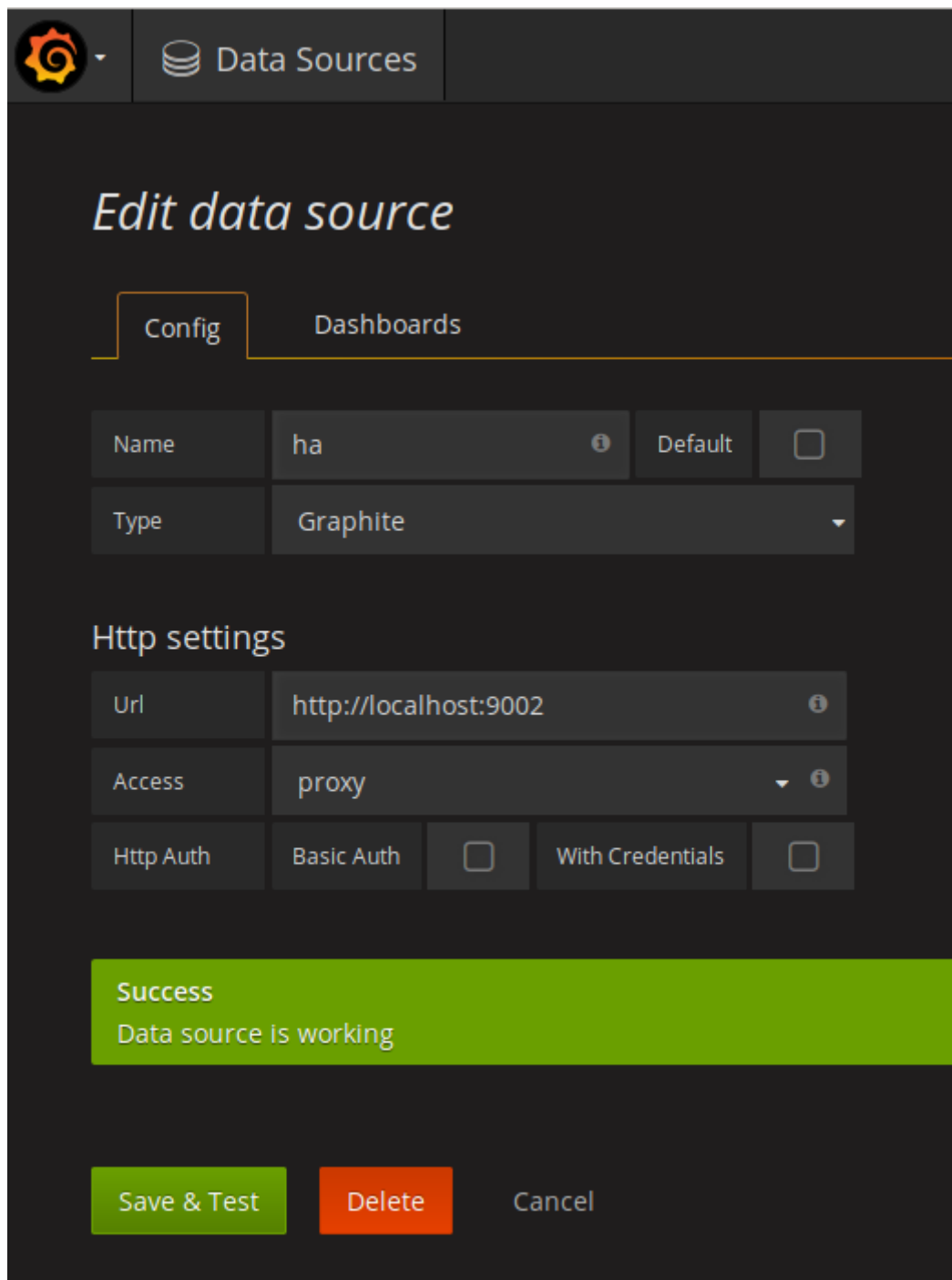
```
[carbon]
pattern = ^carbon\.
retentions = 60:90d

[default]
pattern = .*
retentions = 30s:7d,5m:30d,10m:1y,1d:10y
```

after changing `schemas.conf` older `*wsp` has to be changed with `whisper-resize`

```
<code bash> for i in
find /var/lib/graphite/whisper/ha/ -name "*wsp"; do whisper-resize $i 30s:7d 5m:30d
10m:1y 1d:10y done </code>
===== graphite-web ===== web interface
<code bash> apt-get
install graphite-web </code>
adjust SECRETKEY (with random string) and TIMEZONE in
/etc/graphite/local_settings.py
<code bash> # choose user and password graphite-manage syncdb
#python /usr/lib/python2.7/dist-packages/graphite/manage.py syncdb </code>
===== apache =====
<code bash> sudo apt-get install apache2 libapache2-mod-wsgi </code>
<code bash> sudo cp
/usr/share/graphite-web/apache2-graphite.conf /etc/apache2/sites-available sudo a2ensite apache2-
graphite </code>
===== nginx =====
<code bash> apt install uwsgi uwsgi-plugin-python </code>
<file ini /etc/uwsgi/apps-enabled/graphite.ini> [uwsgi] vacuum = true master = true processes = 2
pidfile = /tmp/uwsgi.pid socket = /tmp/uwsgi.sock chmod-socket = 666 gid = graphite uid = _graphite
chdir = /usr/share/graphite-web wsgi-file = graphite.wsgi pymodule-alias =
graphite.localsettings=/etc/graphite/local_settings.py buffer-size = 65536 plugin = python </file>
<code bash> systemctl restart uwsgi </code>
<file txt /etc/nginx/sites-enabled/graphite> upstream
graphite { server unix:/tmp/uwsgi.sock; } server { listen 9002; server_name localhost; accesslog
/var/log/nginx/graphite-access.log; errorlog /var/log/nginx/graphite-error.log; root /usr/share/graphite-
web/static; location / { addheader Access-Control-Allow-Origin "*"; addheader Access-Control-Allow-
Methods "GET, OPTIONS"; add_header Access-Control-Allow-Headers "origin, authorization, accept";
uwsgi_pass graphite; include /etc/nginx/uwsgi_params; } location /media { # This makes static media
available at the /media/ url. The # media will continue to be available during site downtime, #
allowing you to use styles and images in your maintenance page. alias /usr/lib/python2.7/dist-
packages/django/contrib/admin/media; } } </file>
===== grafana =====
install =====
<code bash> echo "deb https://packagecloud.io/grafana/stable/debian/ jessie main" >
```

```
/etc/apt/sources.list.d/grafana.list curl https://packagecloud.io/gpg.key | sudo apt-key add - apt update apt install -y grafana systemctl enable grafana-server systemctl start grafana-server </code> Login to http://localhost:3000 (admin/admin) add datasource
```



From: <https://wiki.csgalileo.org/> - Galileo Labs

Permanent link: <https://wiki.csgalileo.org/projects/internetofthings/graphite?rev=1489132532>

Last update: 2017/03/10 08:55

